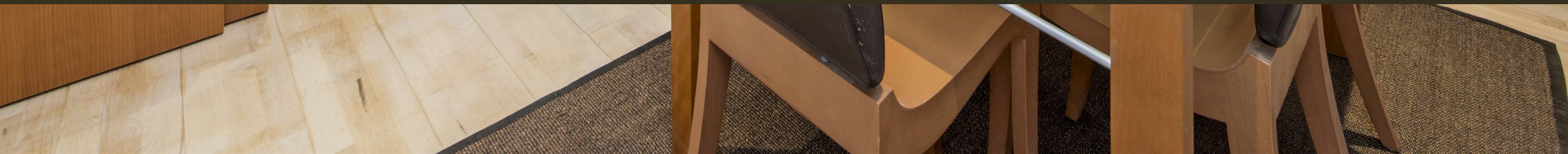




Greycoat Street, Westminster
London SW1P

GARTON JONES.COM



Greycoat Street, Westminster London, SW1P

GARTON JONES.COM

49 Marsham Street Sales +44 (0) 20 7340 0480
London westminster@gartonjones.com
SW1P 3DP www.gartonjones.com

£725 Per Week

We are pleased to offer this well presented 2 bedroom furnished apartment available to rent in this established development in the heart of Westminster. This very spacious apartment measures at 1003 square feet and offers a reception room with access to a balcony, a separate eat in kitchen, two good size double bedrooms with the master benefitting from an en-suite and a further guest bathroom. Further benefits include wood flooring, ample storage and secure entry system. Greycoat House is well positioned for access to the local shopping facilities of Victoria Street and is very close to the renowned local landmarks which include Westminster Abbey, Tate Britain Gallery and the River Thames. There are an abundance of amenities and restaurants such as Osteria dell'Angolo, The Cinnamon Club, Visconti of Westminster (Italian Fine Dining & Cocktail Bar), the Ivy Bar and Grill and Yaatra based in the Old Westminster Fire Station. You are just a short walk away from the Chelsea College of Arts and St Johns Smith Square Concert Halls offering a variety of classical musical performances. The local transport links of Victoria Station is nearby providing mainline UK services including the Gatwick Express as well as the underground services of Victoria, Pimlico, St James Park and Westminster.

*Please note that some furniture may differ to that displayed in the pictures and an internal viewing is always recommended

Minimum Term 12 Months
Security Deposit 5 Weeks
Council Tax Band G (London Borough of Westminster)
EPC Rating B (84)

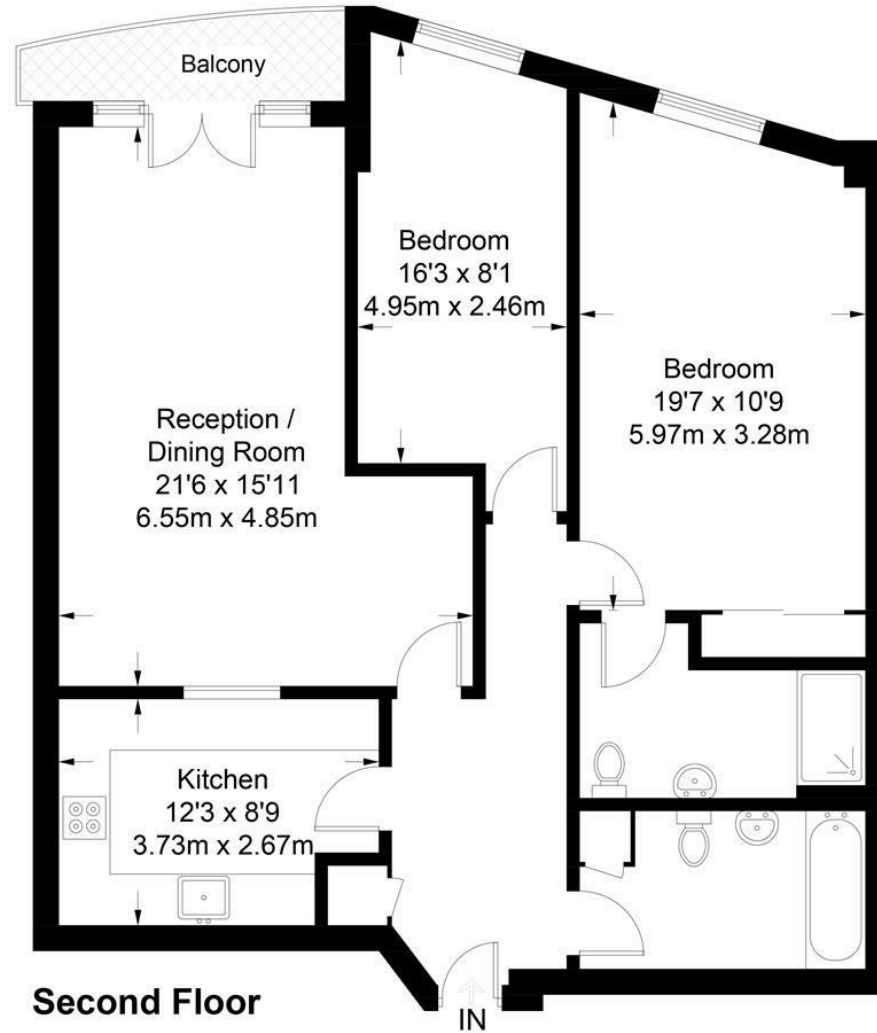
- 2 Bedroom Apartment
- 1003 Square Feet (93.2 Sq.M)
- 2nd Floor (Lift)
- Reception Room
- Separate Kitchen
- 2 Bathrooms (En-Suite)
- Balcony
- Furnished
- Moments From A Selection of Amenities
- Walking Distance to St James' Park, Westminster, Pimlico & Victoria Transport Services



EPC certificate available on request.

Greycoat House

Approximate Gross Internal Area = 1003 sq ft / 93.2 sq m



Not to scale, for guidance only and must not be relied upon as a statement of fact.
All measurements and areas are approximate only and have been prepared in accordance with the current edition of the RICS Code of Measuring Practice.

